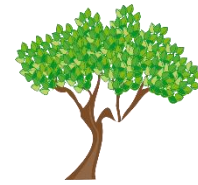




Birch Curriculum Newsletter



History and Geography

This half term we will be looking at schools in the past. In this unit, the children will explore how schools have changed over time and in what ways they have stayed the same. We will be looking at school in the 1900's and whether we would prefer to go to school then or now. We are hoping to take part in a school trip related to this unit.

In the second half of term, our Geography question will be "Would you prefer to live in a hot or cold place?" This unit has a focus on the continents around the world, the equator and the relationship they have with each other. We will look at surviving in the hottest and coldest climates and how they are different.

Maths

In Maths, this term we will be covering place value, addition and subtraction and shape. We are using the new White Rose scheme so lessons will have a new structure that will lend itself very well to Maths mastery.

English

In English we will be covering writing fundamentals, as well as looking at some fantastic fiction books. We will solidify children's understanding of sentence structure and how to correctly punctuate a sentence.

Science

In Science, we are going to be looking at habitats and microhabitats of different living creatures. We will look at adaptations and food chains.

Computing

In computing, the children will be learning about online safety. They will have a chance to deepen their knowledge of using and navigating the laptop operating system.

Music

In Music, we will be learning about the "call and response" composition technique. This focusses around West African music, following the theme of animals.

Phonics and Spelling

Phase 6 phonics will be taught at the start of the year, progressing to looking at spelling rules and understanding grammar.

PSHE

In PSHE, we will be covering the topics "families and relationships" and "health and wellbeing". We will look at what a family is and what makes a healthy relationship with friends. We will also look at healthy diet and exercise.

Art & D&T

First we will be covering our Art topics - Drawing, then Craft and Design. In Autumn 2, we will look at D&T - Structures.

PE

Our PE slot is on Wednesday morning. Please ensure your child comes to school in the correct PE kit suitable for the weather.

RE

In RE, this term we will be answering the questions: Who is God to Muslims? And Why does Christmas matter to Christians?

Timetable:

	8:45 - 9:00	9:00 - 9:15	9:15 - 9:30	9:30 - 10:30	10:30 - 10:45	10:45 - 11:10	11:10 - 12:00	12:00 - 1:00	1:00 - 1:40	1:45 – 2:45	2:45 - 3:10												
Monday	Reading/ TTRockstars/ Numbots/ Register																						
Tuesday													Assembly	Daily Mile	Maths	BREAK	Spelling	English	LUNCH	Guided Reading	History/ Geography		Handwriting
Wednesday													Assembly	Daily Mile	PE	BREAK	Spelling	Maths	LUNCH	English		PSHE	Handwriting
Thursday													Assembly	Daily Mile	Maths	BREAK	Spelling	English	LUNCH	Guided Reading	Science		Handwriting
Friday													Assembly	Daily Mile	Maths	BREAK	Spelling Test	English	LUNCH	Guided Reading	Art/ D&T		Golden Time